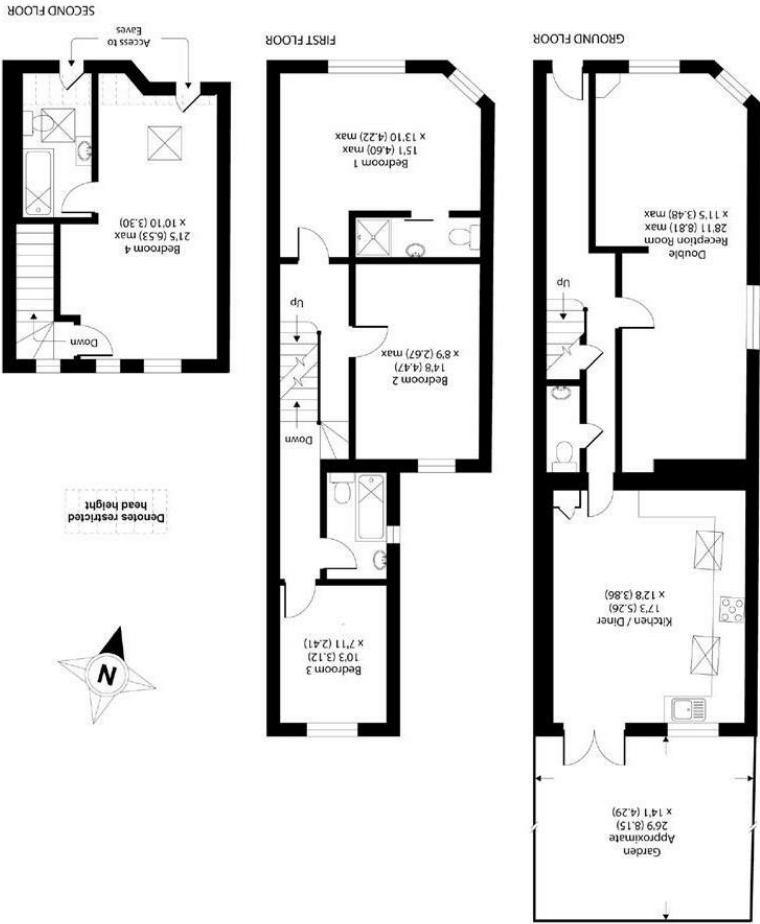
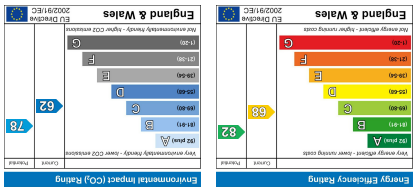


**Important Information**  
All appliances listed in these details are only 'as seen' and have not been tested by Gibson Lane, nor have we sought certification of warranty or service, unless otherwise stated. Measurements, areas and distances are approximate. Floor plans and photographs are for guidance purposes only and must not be relied upon for any purpose. These details are offered on the understanding that all negotiations are made through this company. Neither these particulars, nor verbal representations, form part of any offer or contract, and their accuracy cannot be guaranteed.



APPROX. GROSS INTERNAL FLOOR AREA 1526 SQ FT 141.7 SQ METRES  
(EXCLUDES RESTRICTED HEAD HEIGHT)

34 Richmond Road  
Kingston upon Thames  
Surrey  
KT2 6ED  
www.gibsonlane.co.uk  
Tel: 020 8546 5444



124 Canbury Park Road  
Kingston Upon Thames KT2 6JZ



## Canbury Park Road

Kingston Upon Thames KT2 6JZ

£825,000

A deceptively spacious Four Bed, Three Bath Victorian end of terrace home with well presented accommodation arranged over three floors.

A deceptively spacious Victorian end of terrace home with exceptionally well presented accommodation in excess of 1500sqft arranged over three floors. Ideally situated in this sought after North Kingston location just five hundred yards from Kingston station & convenient for the town centre, River Thames, Richmond Park and excellent local schools. Benefits include four good sized bedrooms, stunning kitchen/Diner, recently fitted bathrooms & en-suite shower room, downstairs cloakroom and landscaped south facing garden.

### Situation

Canbury Park Road is conveniently positioned for Kingston station giving direct access into Waterloo and the A3 which serves both London & the M25. Kingston town centre with its array of shops, restaurants and bars is a short distance away. The standard of schooling in the immediate area is excellent within both the private and state sectors.

**Furnishing:** null  
**Local Authority:**  
**Council Tax Band:**

